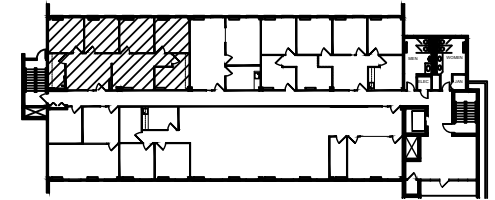
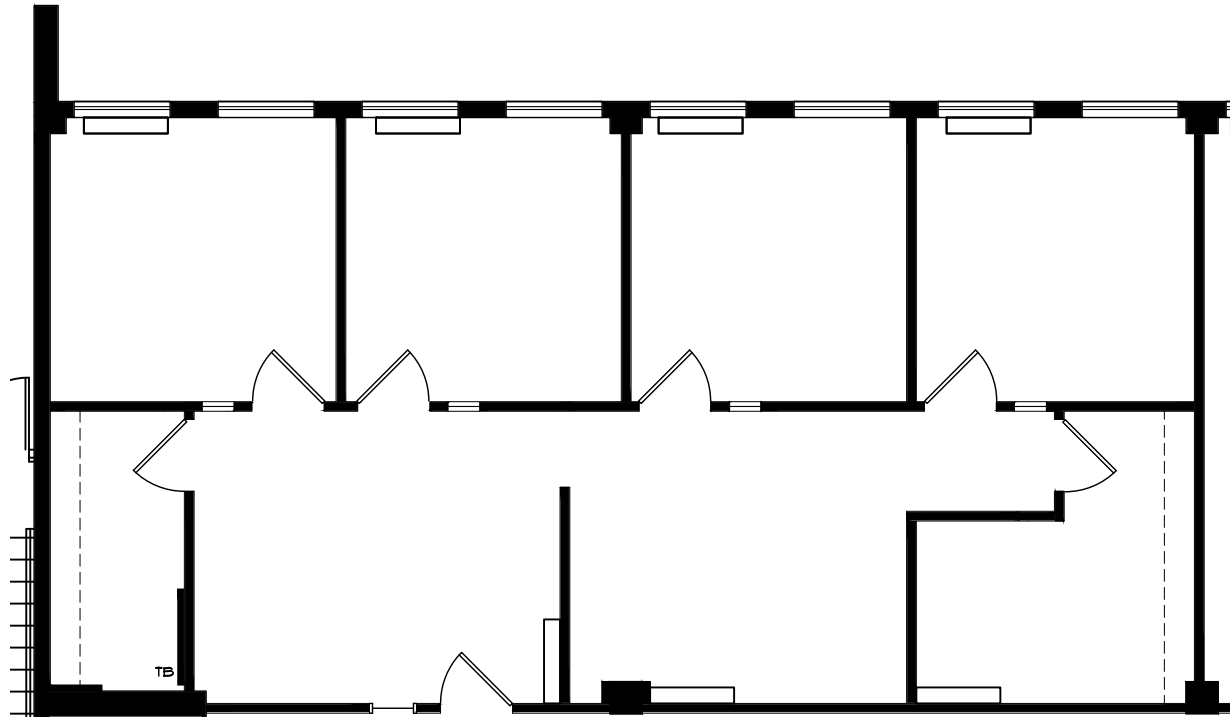


BOULEVARD 25 - 1805 South Bellaire Street

Scale: 1/8" = 1'-0"

Level 1 

September 19, 2023



KEY PLAN

SUITE 185 1,395 SF

boulevard **25**



MATRIX
GROUP, INC.

Lauren Quiram, Director of Leasing
lquiram@matrixgroupinc.com
(303) 300-5271